

Swan River Greenway

Community Engagement Workshop 7th December 2021

Aimee Dunne | Associate DBFL Consulting Engineers

Robert Kelly | Director DBFL Consulting Engineers



Presentation Structure & Content

1. Scheme Introduction

- Scheme Rationale
- Scheme Objectives
- Study Area

2. Challenges and Opportunities

3. Case Studies

4. Timeline



1

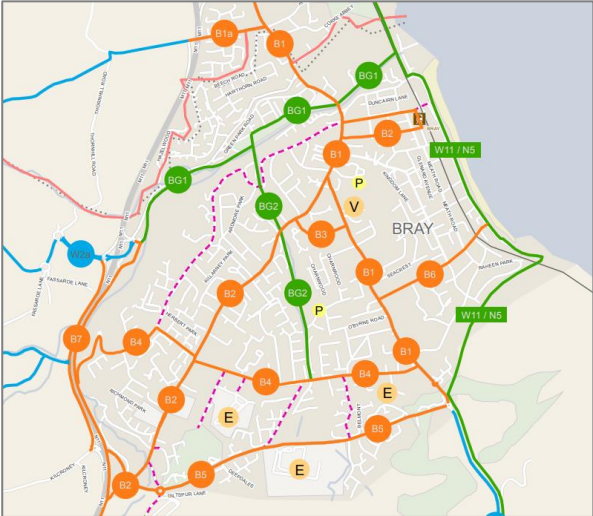
Scheme Introduction



Scheme Rationale



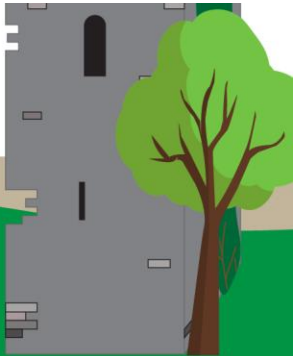
Connectivity



Coherent
Cycle Network

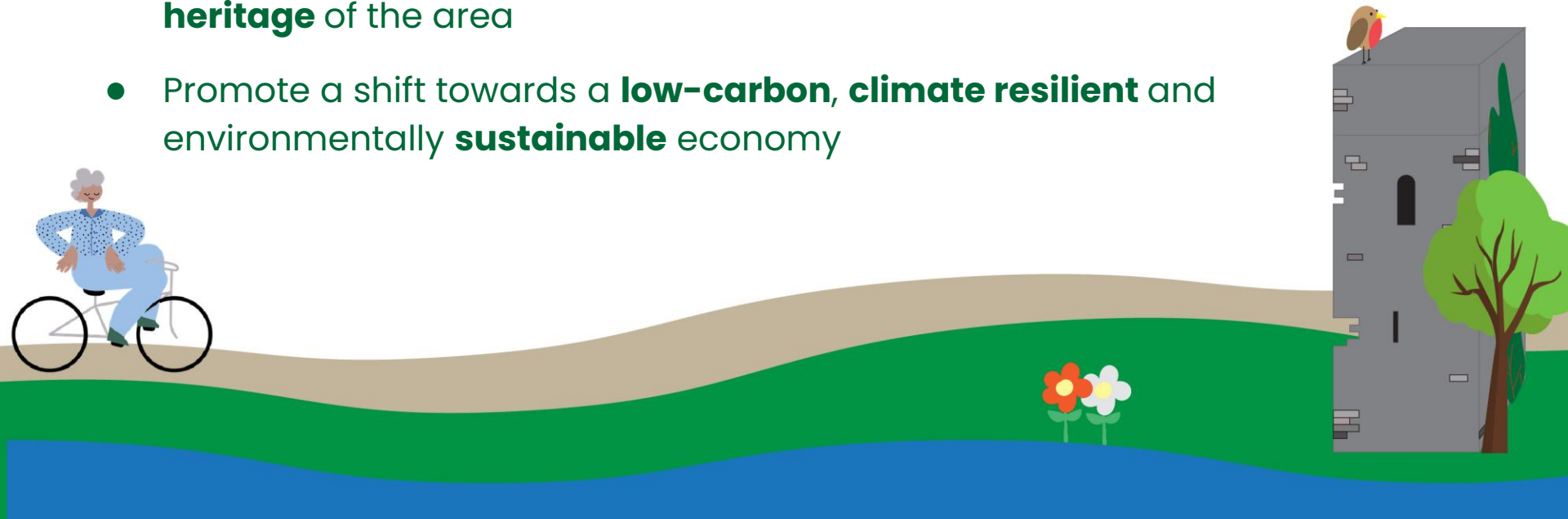


Public
Realm



Scheme Objectives

- Enhance **pedestrian and cycle connectivity** to schools, employment, shops and public transport
- Provide high quality walking and cycling facilities to encourage and support a **modal shift** towards sustainable transport
- Deliver a scheme which has a positive impact on the **public realm** and helps **promote social integration** and **community development**
- Develop a scheme which is sensitive to the **biodiversity** and **cultural heritage** of the area
- Promote a shift towards a **low-carbon, climate resilient** and environmentally **sustainable** economy



Study Area



2

Challenges & Opportunities



Challenges along the Scheme

Barriers to Pedestrian & Cycle Movement



Natural barriers:
Swan River, Giltspur Wood



Challenges along the Scheme

Barriers to Pedestrian & Cycle Movement



Physical barriers:

Legacy of development patterns over time or closing previous links



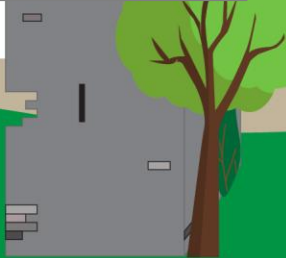
Challenges along the Scheme



- Tree Preservations Orders
- Protected Structures
- Land Ownership
- Land Zoning
- Ecology



Barriers to Pedestrian & Cycle Movement



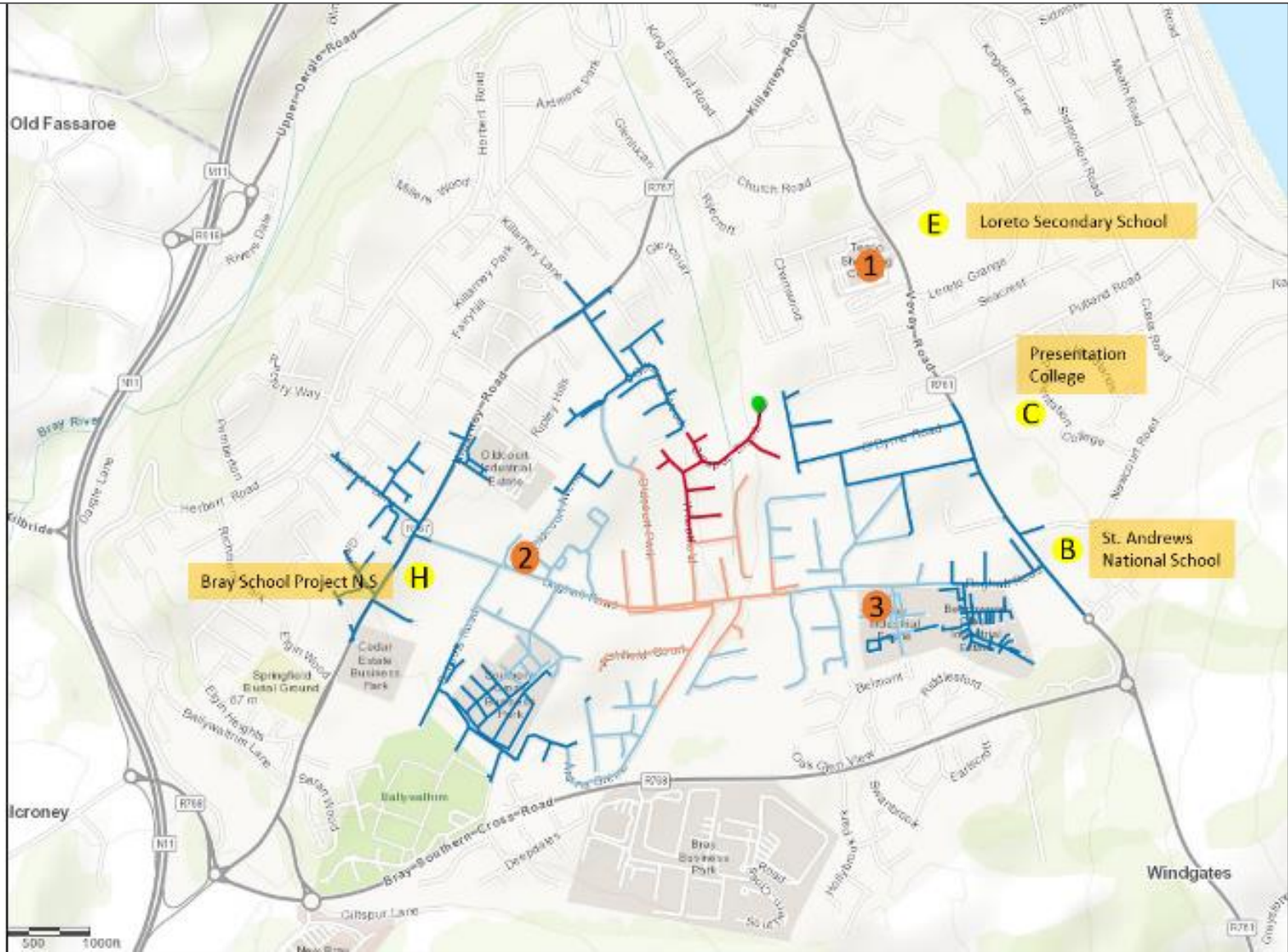
Barriers to Pedestrian & Cycle Movement

Legend

- H** School
- 1** Retail Centre
- Starting Point

Walking Times from Point

- Minutes
- 15.0 - 20.0
 - 10.0 - 15.0
 - 5.0 - 10.0
 - 0 - 5.0



Barriers to Pedestrian & Cycle Movement

Suggested solution



Formalising desire lines



Barriers to Pedestrian & Cycle Movement

Suggested solution



Filtered Permeability



Barriers to Pedestrian & Cycle Movement

Suggested solution



Filtered Permeability



Opportunities along the Scheme

- **Public Realm**

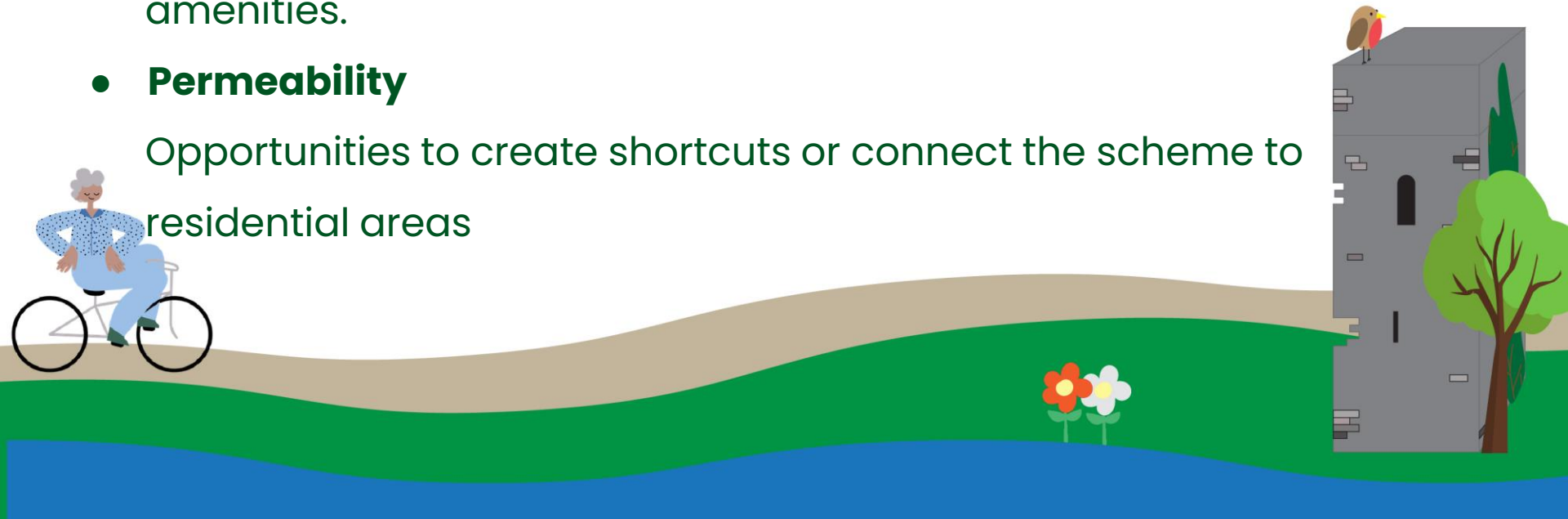
Areas to significantly add or change the public realm for a greater public use, for social space or for greening

- **Space to Use**

Space along the scheme for pedestrian and cycle use and for visual amenities.

- **Permeability**

Opportunities to create shortcuts or connect the scheme to residential areas



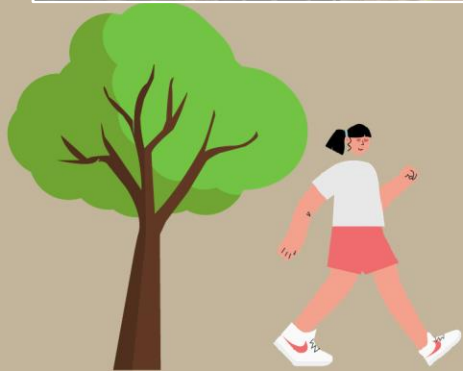
Public Realm



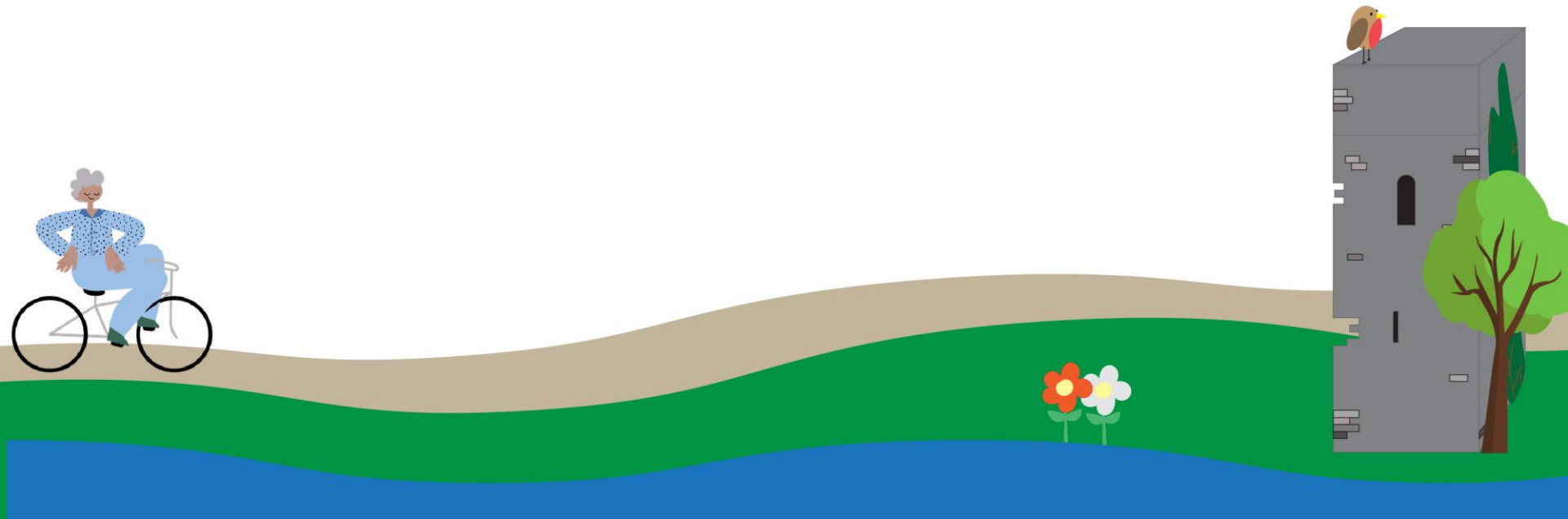
Public Realm

Suggested solution

- Enhancing **local cultural heritage & historic landscapes**
- **Biodiversity enhancements**



Space to Use



Space to Use

Suggested solution

- Space for pedestrian and cycle use.
- Space for visual amenities.



Sports & Play Areas



Community Garden



Fitness Trail / Outdoor Gym



Permeability



Established desire lines



Permeability

Suggested solution

- Formalise desire lines
- Enhance links to existing facilities
- Formalise existing links



3

Case Studies



Case Study

Ballybrack Valley Pedestrian & Cycle Route

📍 Douglas (Cork)



Case Study

Ballybrack Valley Pedestrian & Cycle Route

📍 Douglas (Cork)



Case Study

Royal Canal Urban Greenway

📍 Castleknock, Blanchardstown, Clonsilla, Coolmine



4 Timeline



Overview

